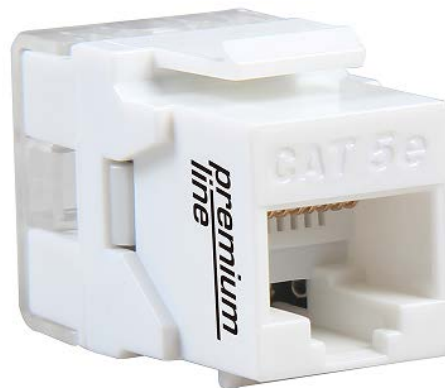


FEATURES:

- Conform to TIA/EIA-568.2-D, ISO/IEC 11801-1 and EN50173-1 specifications
- Compact design is ideal for high density applications
- Supports T568 A&B wiring & easy installation
- Dual IDC connector can accept 22-26 AWG solid cables
- Termination by 110 or Krone tools
- Various of color optional
- ETL Verified
- RoHS compliant

**APPLICATIONS:**

- 1000BASE-T Gigabit Ethernet
- 100BASE-TX Fast Ethernet
- 10BASE-T Ethernet
- Voice, Video and other applications

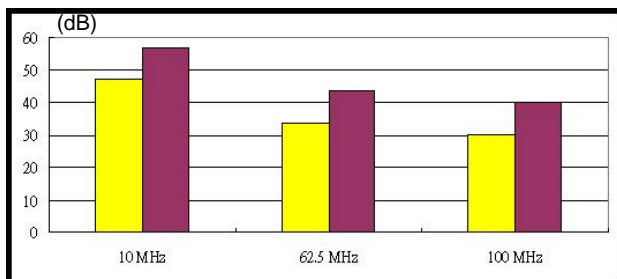
CHARACTERISTICS:

Dielectric Strength	1000V RMS for 1min
Current Rating	1.5Amp Max.
Insulation Resistance	10MΩ Min.
Contact Resistance	2mΩ per contact
Temperature Range	-10°C to 60°C
Humidity	10%~90%; non condensing
Material Flame Rating	PC, UL94 V-0
Admissible Conductor	22AWG ~ 26AWG insulation wire
8pin contact in PCB Jack	Phosphor bronze: 50μ inch gold plated over nickel plated in contact area
	Operating life: Minimum 750 insertions
IDC Contacts	100μ inch nickel plated over phosphor bronze Operating life: Minimum 250 re-terminations

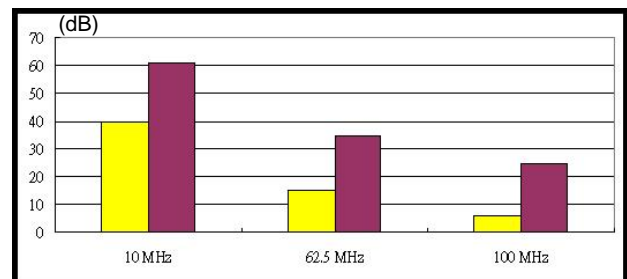
TYPICAL PERFORMANCE:

Channel Performance Data for Cat.5e unshielded solution

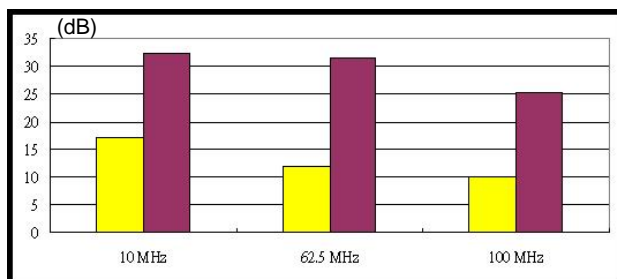
NEXT



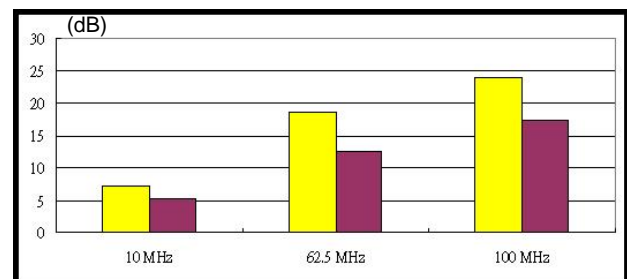
ACR



Return Loss

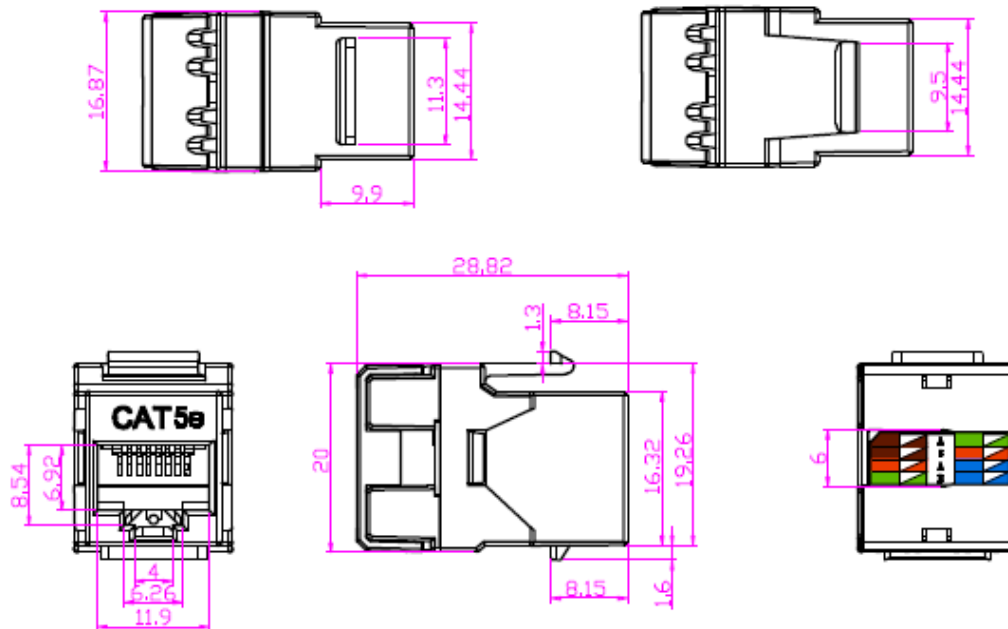


Insertion Loss



Cat.5e Limit
 Typical

DRAWING:



ORDERING INFORMATION:

Part No.	1051210x0
Description	Cat.5e 180° unshielded keystone jack, dual type IDC
x ,color	1: white 2: black 3: red 4: blue 6: green 8:yellow
packing	1pc/PE bag, 50pcs/box, 500 pcs/carton carton size: 53*32*23 cm weight N.W. 4.3 KG G.W. 5.4 KG

Premium-Line Systems GmbH, Rosenheimer Str.89, D-83064 Raubling, Germany

► TEL: + 49(0)8035 9836 0 ► Fax: + 49(0)8035 9836 22

Premium Line Systems GmbH reserves the right to change specifications without prior notice.