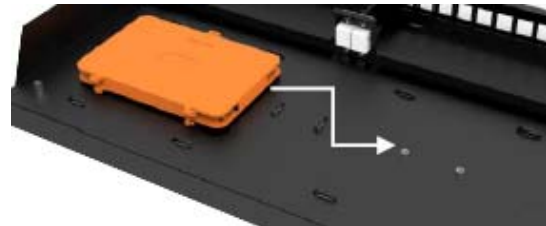
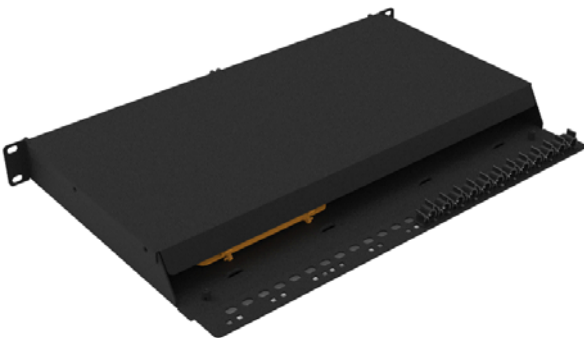


**FEATURES:**

- For 19" rack installation
- Dimensions and mounting compliant with EIA-310D
- 24 ports include copper & fiber
- 2 interface plates are easy to be fixed in the clips locker
- Interface plate for 180° RJ45 Keystone Jack, LC Duplex, SC Simplex, ST & FC Quick Port (All of the fiber optic adapter should be used with the fiber optic adapter support module: 127120000 or 127220000)
- The plates are interchangeable
- Fiber splice tray is up to 24 sleeves
- RoHS compliant



Fiber splice tray position can be adjusted according to demand



**CHARACTERISTICS:**

Material	Patch Panel: Cold rolled steel Splice tray: ABS
Surface finish	Powder coated
Color	RAL 9005
Width x Height x Depth	482.6 x 313 x 44mm

*Premium Line Systems GmbH reserves the right to change specifications without prior notice.*

**ACCESSORIES**

Items	Quantity	Remark
Splice Tray	1 pc	Plastic / Orange Color
Fiber Protection Sleeve 60*2.5mm	12 pcs	Single Fiber
Cable clip	12 pcs	Black Color
Magic Stick Strip 10*100mm	6 pcs	Black Color
M3 Screw	2 pcs	Material: Stainless Steel
Ground Wire 0.5sqmm*250mm	2 pcs	Yellow + Green Color

**ORDERING INFORMATION:**

Part NO. 248170242  
Description 1U 19" copper & fiber, hybrid patch panel, 24 ports, no-load, with cover, black  
Packing 1pc/ box; 5pcs/carton  
box size:520\*50\*370mm carton size:540\*290\*390mm

Premium-Line Systems GmbH, Rosenheimer Str.89, D-83064 Raubling, Germany

► TEL: + 49(0)8035 9836 0 ► Fax: + 49(0)8035 9836 22

*Premium Line Systems GmbH reserves the right to change specifications without prior notice.*