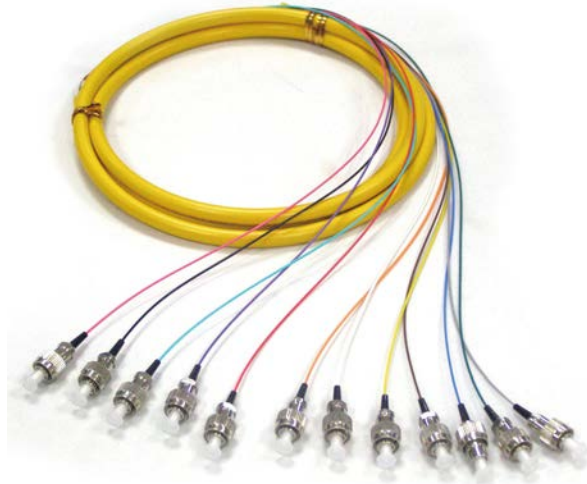


FEATURES:

- Meet TIA/EIA-568-B.3 and ISO/IEC 11801 specifications for insertion loss
- ITU-T G.651/652D compliant
- Easy installation, easy identification
- Low insertion loss, high return loss
- RoHS compliant



APPLICATIONS:

- Telecom network
- CATV
- FTTH
- End equipment
- Local Area Network
- Test equipment

TYPICAL PERFORMANCE:

Connector Type		ST	LC	SC	FC
Insertion Loss		<0.3dB	<0.3dB	<0.3dB	<0.3dB
RL	UPC	≥50dB	≥50dB	≥50dB	≥50dB
	(SM/MM)	≥40dB	≥40dB	≥40dB	≥40dB
	APC	≥60dB	≥60dB	≥60dB	≥60dB
Interchange capability (1000 times)		<0.1dB	<0.1dB	<0.1dB	<0.1dB
Impact 1.5mm drop, 8 times		<0.1dB	<0.1dB	<0.1dB	<0.1dB
Working temperature		-40°C~80°C	-40°C~80°C	-40°C~80°C	-40°C~80°C

Premium Line Systems GmbH reserves the right to change specifications without prior notice.

FIBER COLOR CODE:

No. of fiber	1	2	3	4	5	6
Color of fiber	Blue	Orange	Green	Brown	Grey	White
No. of fiber	7	8	9	10	11	12
Color of fiber	Red	Black	Yellow	Violet	Pink	Aqua

ORDERING INFORMATION:

Part No. 22wxy3zzz
Description: Premium Line fiber optic 12 pack pigtail, 900µm
w, mode 1: 62.5/125 2: 50/125 3: 9/125 4: OM3
x, sheath 5: PVC 6: LSOH
y, connector type 1: SC/UPC 2: ST/UPC 3: FC/UPC 4: LC/UPC
6: SC/APC 7: ST/APC 8: FC/APC 9: LC/APC
zzz, length 010: 1.0m 100: 10m 001: 100m

Premium-Line Systems GmbH, Rosenheimer Str.89, D-83064 Raubling, Germany

► TEL: +49(0)8035 9836 0 ► Fax: +49(0)8035 9836 22

Premium Line Systems GmbH reserves the right to change specifications without prior notice.