

FEATURES:

- Conform to TIA/EIA-568.2-D, ISO/IEC 11801-1, EN 50173-1 Class Ea specification
- Enhanced circuit board and optimization of IDC pin geometry design
- Improved RJ45 contacts provide superior performance
- Terminate with 110 or krone tools
- Dual IDC connector can accept 22-26 AWG solid cables
- RoHS compliant

***APPLICATION:***

- 10GBASE-T Ethernet
- 1000BASE-TX Gigabit Ethernet
- 1000BASE-T Gigabit Ethernet
- 100BASE-TX Fast Ethernet.
- 10 BASE-T Ethernet.
- Voice, Video and other applications.

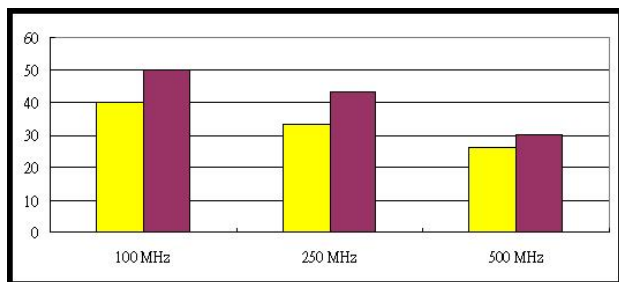
CHARACTERISTICS

Dielectric Strength	1000V RMS for 1min
Current Rating	1.5Amp Max.
Insulation Resistance	10MΩ Min.
Contact Resistance	2mΩ per contact
Temperature Range	-10° to +60°
Humidity	10%~90%; non condensing
Material Flame Rating	PC, UL94 V-0
Admissible Conductor	22AWG ~ 26AWG insulation wire
8pin contact in PCB Jack	Phosphor bronze, 50μ inch gold plated over nickel plated in contact area
Operating life:	Minimum 750 insertions
IDC Contacts	100μ inch nickel plated over phosphor bronze
Operating life:	Minimum 250 Re-terminations

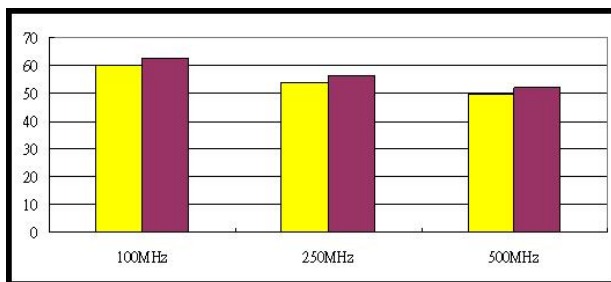
TYPICAL PERFORMANCE:

Channel Performance Data for 10G 6A Unshielded Solution

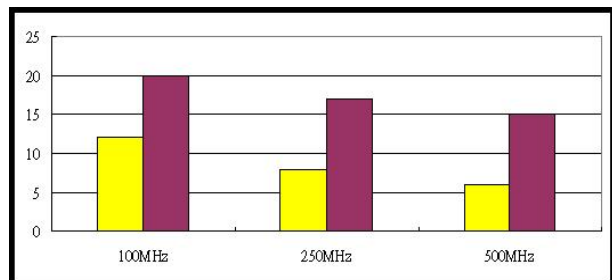
PSNEXT



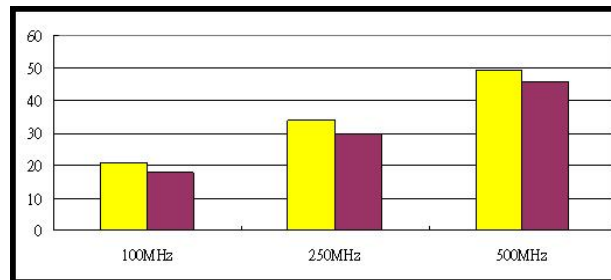
PSANEXT



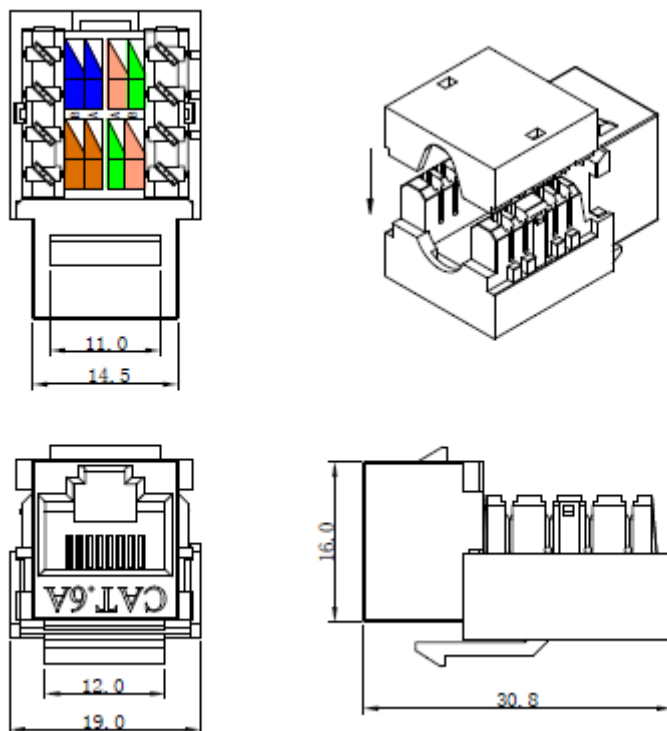
Return Loss



Insertion Loss



■ Cat.6A Limit ■ Typical

DRAWING:***ORDERING INFORMATION:***

Part NO.	1091110x0
Description	Cat.6A 90° unshielded keystone jack, dual type IDC
x, color	1: white 2: black 3: red 4: blue 6: green 8: yellow
Packing	1pc/PE bag, 50pcs/ box, 500 pcs/carton
	carton size 53.8*35.2*27 cm weight N.W. 3.6KG G.W. 7.9KG

Premium-Line Systems GmbH, Rosenheimer Str.89, D-83064 Raubling, Germany

► TEL: + 49(0)8035 9836 0 ► Fax: + 49(0)8035 9836 22

Premium Line Systems GmbH reserves the right to change specifications without prior notice.