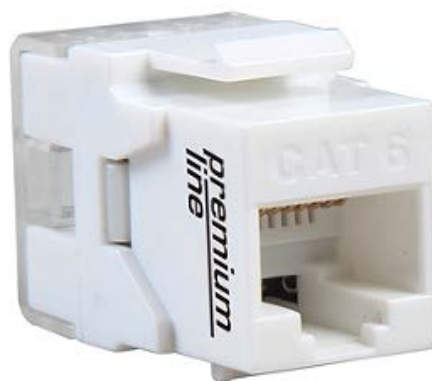


**FEATURES:**

- Conform to TIA/EIA-568.2-D, ISO/IEC 11801-1 and EN50173-1 specifications
- Compact design is ideal for high density applications
- Supports T568 A&B wiring & easy installation
- Dual IDC connector can accept 22-26 AWG solid cables
- Termination by 110 or Krone tools
- Various of color optional
- ETL Verified
- RoHS compliant



**APPLICATIONS:**

- 1000BASE-TX Gigabit Ethernet
- 1000BASE-T Gigabit Ethernet
- 100BASE-TX Fast Ethernet.
- 10BASE-T Ethernet.
- Voice, Video and other applications.

**CHARACTERISTICS:**

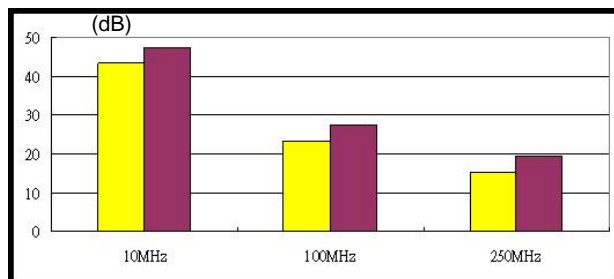
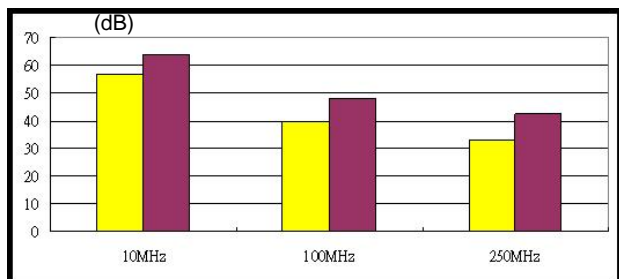
Dielectric Strength	1000V RMS for 1min
Current Rating	1.5Amp Max.
Insulation Resistance	10MΩ Min.
Contact Resistance	2mΩ per contact
Temperature Range	-10° to 60° C
Humidity	10%~90%; non condensing
Material Flame Rating	PC, UL94 V-0
Admissible Conductor	22AWG ~ 26AWG insulation wire
8pin contact in PCB Jack	Phosphor bronze: 50μ inch gold plated over nickel plated in contact area
	Operating life: Minimum 750 insertions
IDC Contacts	100μ inch nickel plated over phosphor bronze Operating life: Minimum 250 re-terminations

**TYPICAL PERFORMANCE:**

Channel Performance Data for Cat.6 unshielded solution

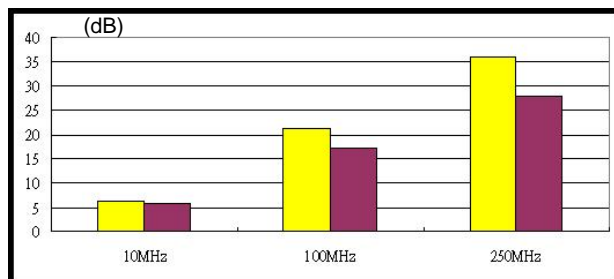
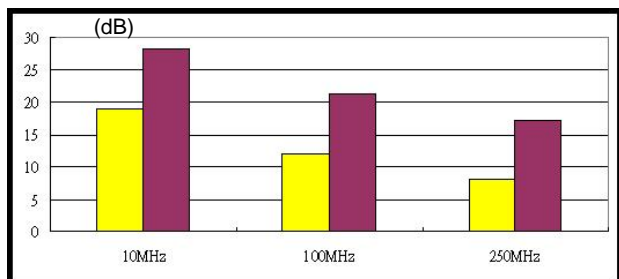
**NEXT**

**ELFEXT**



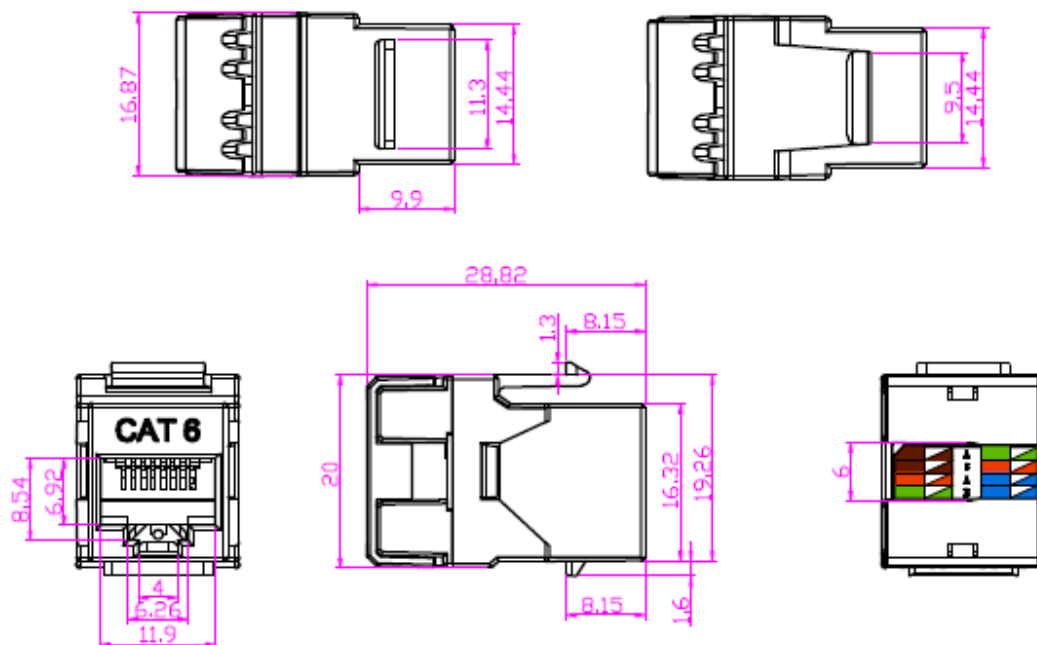
**Return Loss**

**Insertion Loss**



Cat.6 Limit
  Typical

**DRAWING:**



**ORDERING INFORMATION:**

Part NO.	1061210x0
Description	Cat.6 180° unshielded keystone jack, dual type IDC
x, color	1: white 2: black 3: red 4: blue 6: green 8: yellow
Packing	1pc/PE bag, 50pcs/box, 500 pcs/carton
	carton size 53*32*23 cm weight: N.W. 4.3 KG G.W. 5.4 KG

Premium-Line Systems GmbH, Rosenheimer Str.89, D-83064 Raubling, Germany

► TEL: + 49(0)8035 9836 0 ► Fax: + 49(0)8035 9836 22

Premium Line Systems GmbH reserves the right to change specifications without prior notice.